

Compact and big on performance!



## MF-550

The Mist-Fit MF-550 mist collector offers top performance in a compact design. With progressive filtration, including a depth loading filterbed filter, it ensures clean air and minimal maintenance.

Suited for high-pressure applications, it eliminates mist and smoke efficiently. Its lightweight build and over 50 mounting accessories ensure easy installation.

Opt for MF-550 for a safer, cleaner workspace.

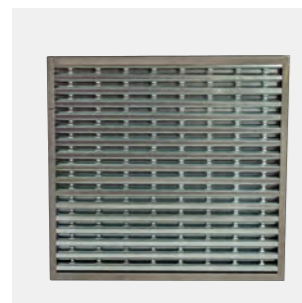
### Product Specs

Air Flow	500-600 cfm
Machine Tool Encl. Recom. Volume	Up to 200 ft <sup>3</sup>
Motor	0.75 hp
Voltage (Amps)	115/1/60(4.9) 220/1/60(2.5) 230/3/60(1.57) 460/3/60 (0.95)
Inlet Connection	6" Ø
Sound	68 dB(a)
Coolant	30 – 3000 psi
Oil	30 – 2000 psi

pH limit	5.8 – 9.8
Temp limit	50 °C / 125 °F
Weight	96 lbs
Length	20"
Width	20"
Height	28"
HEPA Filter	Optional

The Mist-Fit offers unmatched versatility with modular designs for optional prefilters and HEPA filters. User-friendly and efficient, easily replaceable filters minimize downtime, saving time and costs.

## Replacement Filters



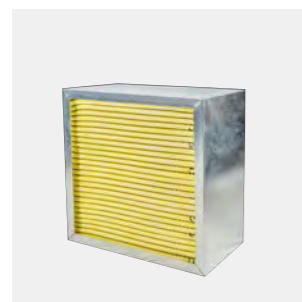
**1st stage mechanical element**

MF55-F001



**2nd stage demister element**

MF55-F002



**3rd stage fibre bed filter**

MF55-F007



Optional **4th stage filter**

4" HEPA 95%

MF55-F004

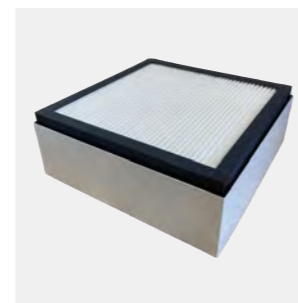
8" HEPA 99.9%

MF55-F005

8" Odor-Rid Filter

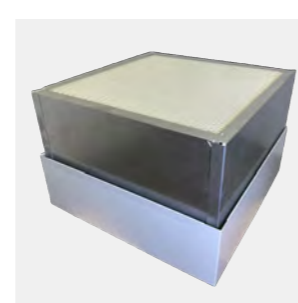
MF55-F009

## Filter Kits



**HEPA Filter Kit 4" c/w HEPA filter 95%**

MF55-F011



**HEPA Filter Kit 8" c/w HEPA filter 99.9%**

MF55-F012



**Odor-Rid Filter Kit 8" c/w Odor-Rid filter**

MF55-F013

## Optional Filters



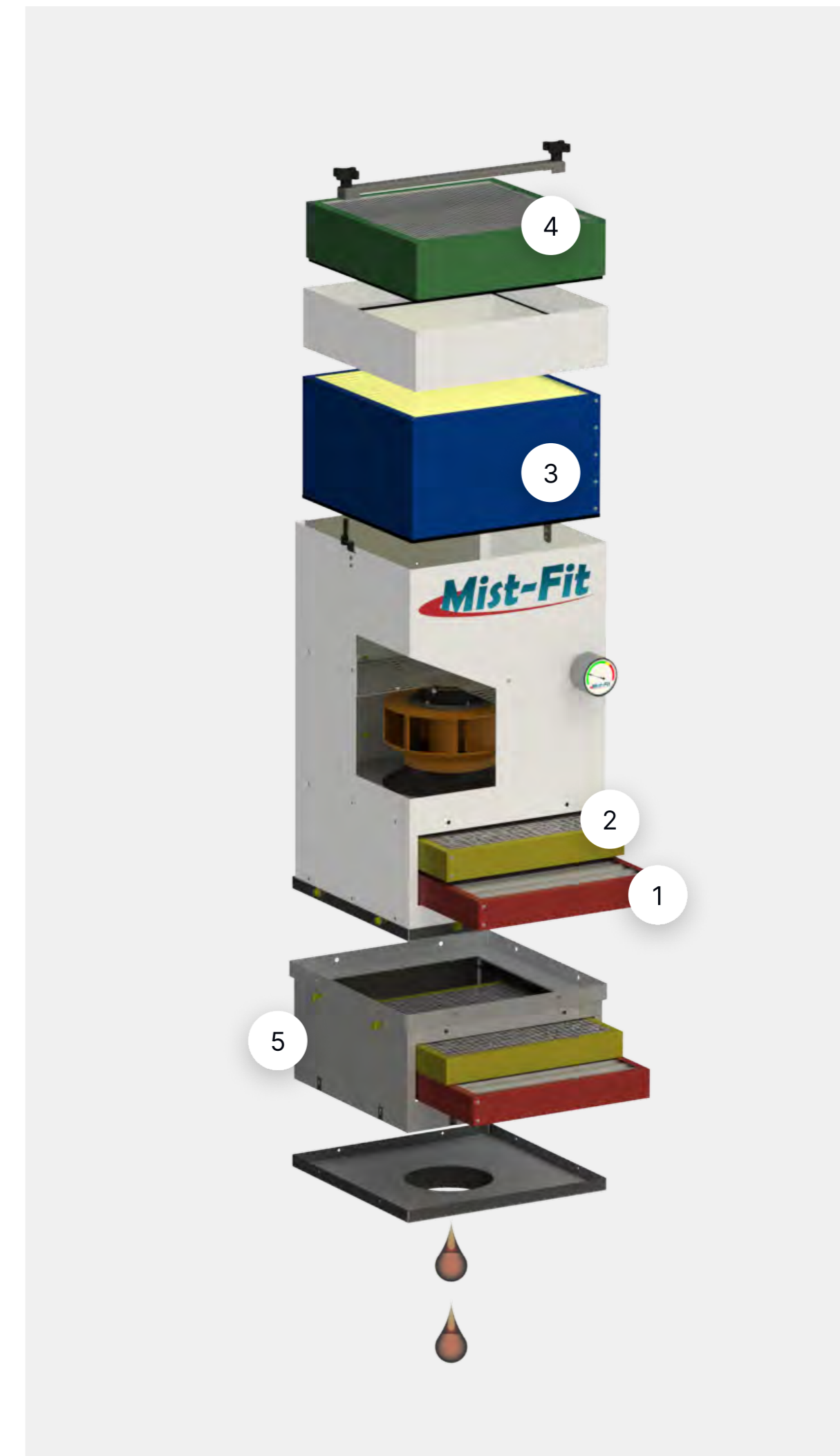
**5th - Pre filtration box**

For Oil and Heavy Mist, recommended for Swiss Screw Machines

MF55-F014

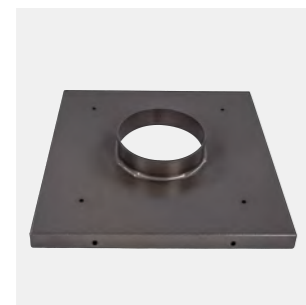
**1st stage mechanical element**

**2nd stage demister element**



The baseplate allows for direct machine mount installation and stabilizes the Mist-Fit collector, preventing movement or vibration, ensuring efficient mist collection and reducing environmental disruptions.

## Baseplates



### Standard

MF - 550 [MF55-B001](#)  
 MF - 560 & 1050 [MF10-B001](#)  
 MF - 1950 [MF19-B001](#)



### Blank

MF - 550 [MF55-B008](#)  
 MF - 560 & 1050 [MF10-B008](#)  
 MF - 1950 [MF19-B008](#)



### Side Mount

MF - 550 [MF55-B003](#)  
 MF - 560 & 1050 [MF10-B003](#)  
 MF - 1950 [MF19-B003](#)



### Pedestal

MF - 550 [MF55-B004](#)  
 MF - 560 & 1050 [MF10-B004](#)



### Off-set Pedestal

MF - 550 [MF55-B005](#)  
 MF - 560 & 1050 [MF10-B005](#)



### Kit for Surface Grinder

MF - 550 [MF55-A026 \(Kit\)](#)  
 Base Only [MF55-BD32](#)  
 (Base only 4" & 2")



### Bases with oil Drains

MF - 550 [MF55-BD10](#)  
 MF - 560 & 1050 [MF10-BD01](#)  
 MF - 1950 [MF19-BD17](#)



### Plenum

MF - 550 [MF55-B028](#)  
 MF - 560 & 1050 [MF10-B029](#)  
 MF - 1950 [MF10-B014](#)



### Base w/ Tee Inlet

MF-1050 [MF10-B015](#)  
 (For high liquid volume or spray cleaning elements).



### Universal Installation Kit

MF - 550 [MF55-A025](#)  
 MF - 560 & 1050 [MF10-A024](#)  
 MF - 1950 [MF19-A024](#)  
 (Baseplate and machine stand sold separately)

We offer an extensive selection of baseplates designed for seamless integration with leading machine brands and the option to manufacture custom baseplates tailored to your specific requirements:



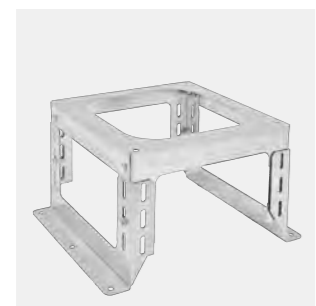
Explore Mist-Fit's accessories aimed at optimizing your mist collector's performance, improving its usability, and customizing it to fit your unique operational needs.

## Mounting Accessories



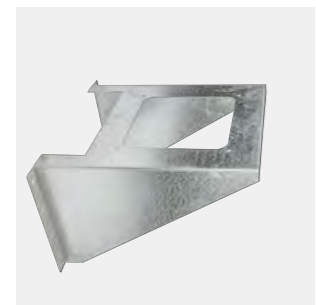
### Suspension Bracket

- MF - 550      [MF55-B007](#)
- MF - 560 & 1050      [MF10-B007](#)
- MF - 1950      [MF19-B007](#)



### Machine Stand

- MF - 550      [MF55-B219](#)
- MF - 560 & 1050      [MF10-B219](#)
- MF - 1950      [MF19-B219](#)



### Wall-mount

- MF - 550      [MF55-B006](#)
- MF - 560 & 1050      [MF10-B006](#)
- MF - 1950      [MF19-B006](#)



### Floor Stand Adjustable 6'-8'

- MF - 550      [MF55-B219](#)
- MF - 560 & 1050      [MF10-B219](#)
- MF - 1950      [MF19-B219](#)

## Miscellaneous Accessories



### Chip Strainer

- MF - 550      [MF55-A907](#)
- MF - 560      [MF55-A907](#)
- MF - 1050      [MF10-A011](#)
- MF - 1950      [MF19-A011](#)



### Suction Hose - 1

- MF-550/560      [099MPH-0006](#)
- MF - 1050      [099MPH-0008](#)
- MF - 1950      [099MPH-0012](#)



### Hose clamp - 2

- MF - 550 & 560      [099AHC-0006](#)
- MF - 1050      [099AHC-0008](#)
- MF - 1950      [099AHC-0012](#)



### Machine adapter

- MF - 550 & 560      [099AMS-0006](#)
- MF - 1050      [099AMS-0008](#)
- MF - 1950      [099AMS-0012](#)

## Hood & Curtain

Model	Hood	Curtain
MF - 550	<a href="#">Not available</a>	<a href="#">Not available</a>
MF - 560 & 1050	<a href="#">MF10-H001</a>	<a href="#">MF10-HC01</a>
MF - 1950	<a href="#">MF19-H001</a>	<a href="#">MF19-HC01</a>

## Replacement Parts

### Motorized Impeller

Model	Voltage		
	115/1/60	220/1/60	230/460/3/60
MF-550/560	<a href="#">MF55-M115</a>	<a href="#">MF55-M220</a>	<a href="#">MF55-M460</a>
MF-1050	<a href="#">N/A</a>	<a href="#">N/A</a>	<a href="#">MF10-M460</a>
MF1950	<a href="#">N/A</a>	<a href="#">N/A</a>	<a href="#">MF19-M460</a>

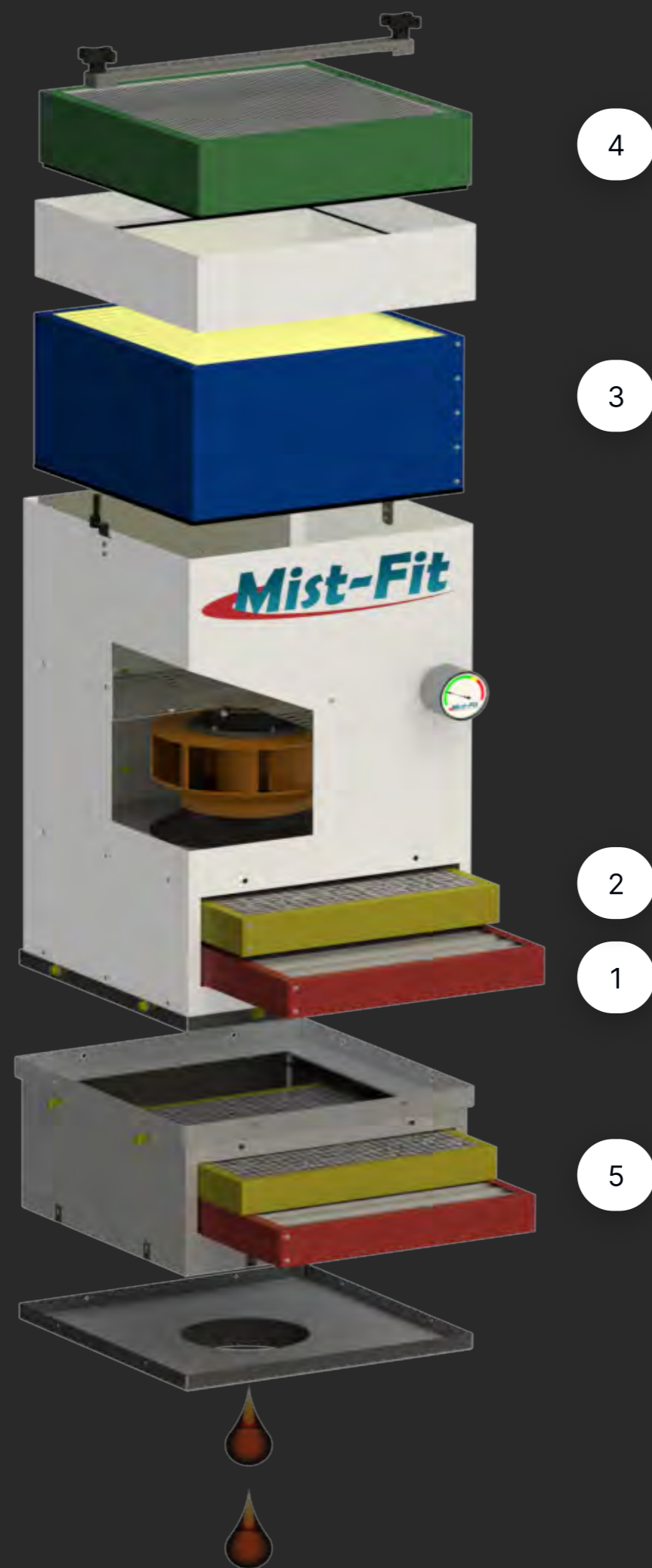


### Status Gauge

[MF-A031](#)

# Mist-Fit Filter Technology

Manufactured in Canada, and trusted by all



1. Mechanical Element: Separates up to 90% of coolant/oil mist and swarf, draining fluid back to the sump through smooth metal surfaces.
2. Demister Element: Supports the first stage, removing up to 95% of mist and swarf with washable filters.
3. Depth Loading Fibrebed Filter: Rated MERV 15, its depth-loading offers up to 25 times more surface area than standard filters. Outclasses competitors with its thick composition, minimizing blockage and boosting efficiency. Built for longevity with a 1-3 year lifespan.
4. Optional HEPA Filter: Our optional HEPA filter comes in two variants: 95% efficiency at 0.3 microns or 99.97% at 0.3 microns providing solutions for the most demanding applications. These filters are made with exclusive heavy-duty filter media, ensuring exceptional performance and longevity.
5. Pre-Filter Box: Filtration module containing non-consumable mechanical element and demister filters. Recommended for oil and heavy mist, particularly beneficial for Swiss lathes. Significantly extends filter life.



Contact US

## The Mist-Fit High Performing, Compact Mist Collectors

The Mist-Fit is a line of compact yet powerful mist collectors designed to effectively remove harmful airborne particulates such as coolant and oil mist, a common byproduct of machining applications. Mitigate the risks associated with oil mist exposure to your personnel and facility by opting for an Aeroex Mist-Fit mist collector that meets your unique operational needs.



Installation Gallery

## Mounting Options

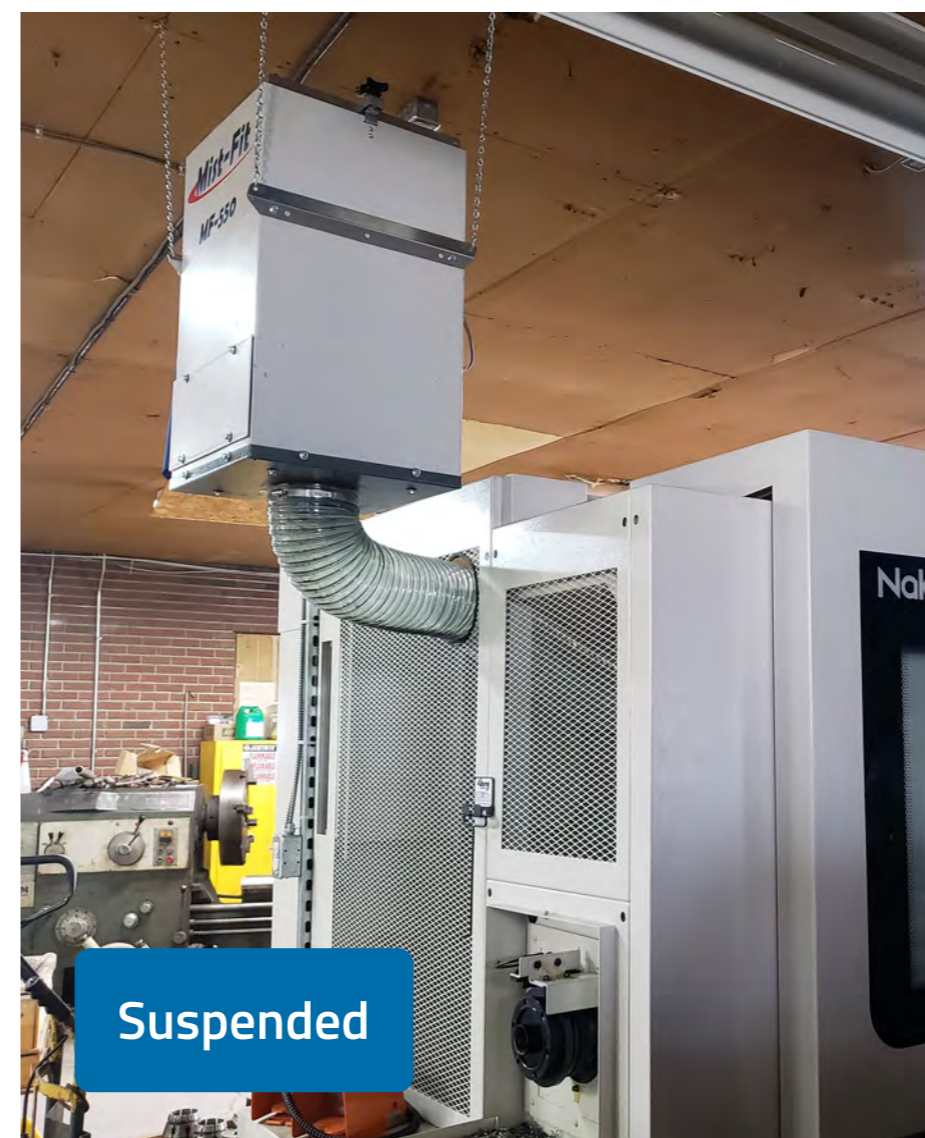
The Mist-Fit features flexible mounting options for maximum efficiency and customizability in industrial environments. It has a modular design that allows versatile installation in different arrangements and spots, with over 50 machine mount variations ensuring a seamless process.

**Direct Mount:** Suitable for compact spaces, it directly affixes the mist collector to the machine tool, minimizing the spread of airborne contaminants.

**Suspended:** Ideal for limited floor space or closely located machines, suspending the mist collector from the ceiling allows it to be connected one or more machines.

**Wall Mount:** Saves floor space by utilizing vertical space, ideal for smaller spaces or when other mounts are not feasible.

**Floor Stand:** Offers flexibility by placing the collector on an adjustable floor stand and connecting it with a suction hose, overcoming obstructions that prevent direct mounting.



## Machine specific mounting available

### Pedestal



**Pedestal Mount:** elevates the mist collector, ideal for machines with limited surface area around the suction port.

### Side Mount



**The Side Mount:** attaches the mist collector to the side of the machine, maximizing available vertical space and keeping it near the mist source.

### Offset Pedestal



**Offset Pedestal:** elevates and offsets the center of the mist collector, ideal for machines with limited space the suction port.

### Universal Installation Kit



**Universal Installation Kit:** places the mist collector on an adjustable 11" stand connecting to the machine using suction hose. Offering flexible positioning and easy relocation as facility or machine needs change.

\*for drawings and manuals visit [www.aeroex.com/downloads](http://www.aeroex.com/downloads)

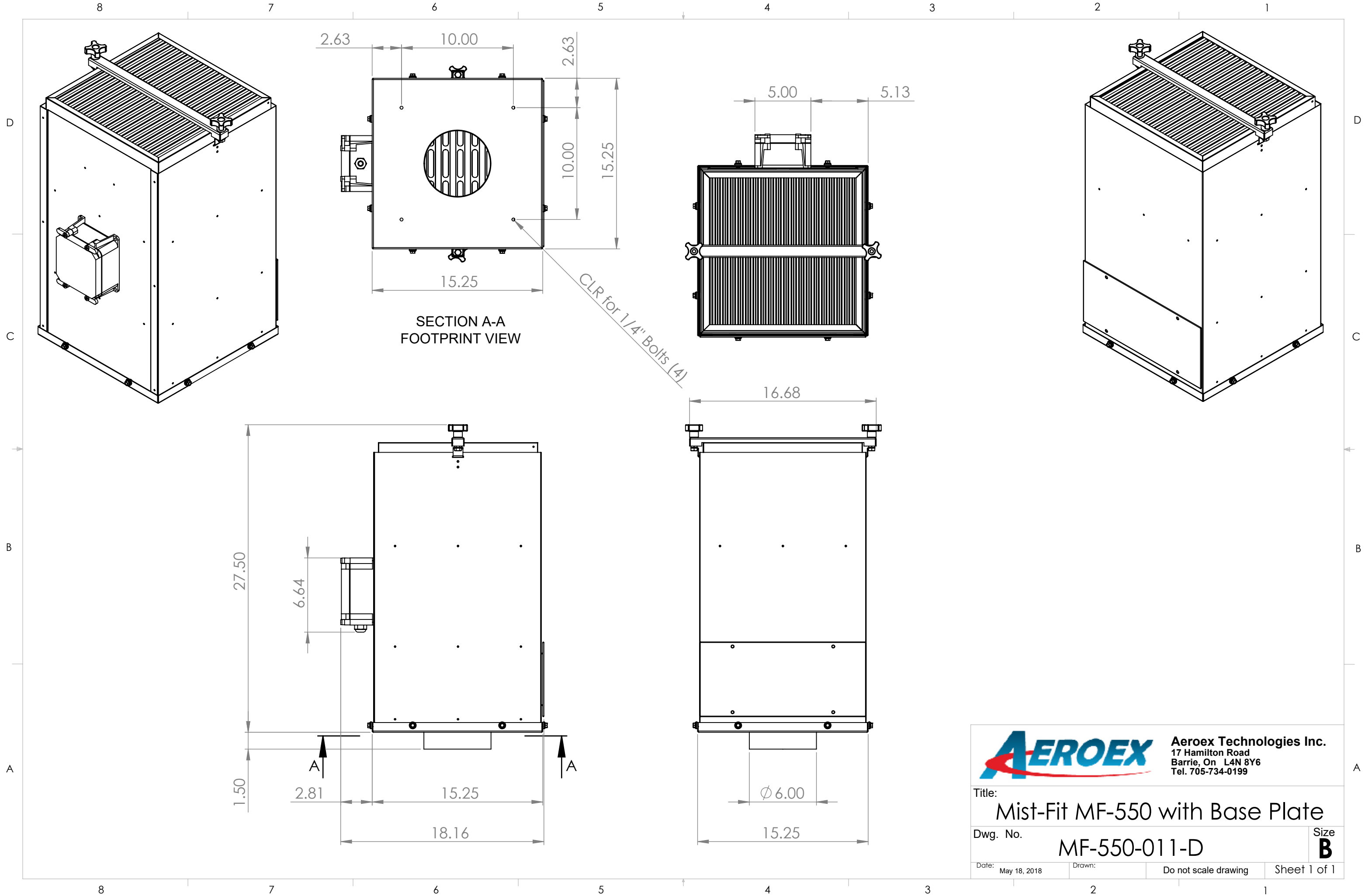


# The Mist-Fit Comparison Table

Manufactured in Canada, and trusted by all



Specification	MF-550 	MF-560 	MF-1050 	MF-1950 
Air Flow	500-600 cfm	500-600 cfm	900-1100 cfm	1900-2000 cfm
Machine Tool Ecn. Reccommended Vol.	Up to 250 ft <sup>3</sup>	Up to 250 ft <sup>3</sup>	Up to 450 ft <sup>3</sup>	Up to 2000 ft <sup>3</sup>
Motor	0.75hp	0.75hp	1.5hp	3hp
Voltage(Amps)	115/1/60 (4.9) 220/1/60 (2.5) 230/3/60 (1.57) 460/3/60 (0.95)	115/1/60 (4.9) 220/1/60 (2.5) 230/3/60 (1.57) 460/3/60 (0.95)	230/3/60 (2.7) 460/3/60 (1.6)	230/3/60 (6.0) 460/3/60 (3.3)
Inlet Connection (standard)	6" Ø	6" Ø	8" Ø	12" Ø
Coolant	✓	✓	✓	✓
High Pressure Coolant	✓	✓	✓	✓
Oil	✓	✓	✓	✓
High Pressure Oil	✓	✓	✓	✓
Heavy Smoke		✓		
Sound	68 dB(A)	68 dB(A)	69 dB(A)	72 dB(A)
pH limit	5.8 - 9.8a	5.8 - 9.8a	5.8 - 9.8a	5.8 - 9.8a
Temp limit	50°C / 125 °F	50°C / 125 °F	50°C / 125 °F	50°C / 125 °F



**AEROEX** Aeroex Technologies Inc.  
 17 Hamilton Road  
 Barrie, On L4N 8Y6  
 Tel. 705-734-0199

Title: Mist-Fit MF-550 with Base Plate

Dwg. No. MF-550-011-D

Date: May 18, 2018 Drawn: Do not scale drawing Sheet 1 of 1

Size **B**

8 7 6 5 4 3 2 1

D  
C  
B  
A

D  
C  
B  
A

Leave adequate clearance to ceiling for filter changes

Mist-Fit MF-550

Access Door  
Leave adequate clearance for filter change

Hex Bolt 1/4"-20 (x4)  
with 1/4" Sealing Washer

Base Plate

Hex Bolt 1/4"-20 (x8)  
with 1/4" Sealing Washer

Base Plate 15.25" x 15.25"

CNC Machine Top

Cut a 6 inch diameter hole (minimum)  
in a suitable location  
if no machine knock out is provided

Hex Nut 1/4"-20 (x4)

Drill clearance holes for 1/4" bolts  
use Base Plate as a template  
and drill to suit



**Aeroex Technologies Inc.**  
17 Hamilton Road  
Barrie, On L4N 8Y6  
Tel. 705-734-0199

Title: **Installation, MF-550, Base Plate**

Dwg. No. **M05MBD-0011-D** Size **B**

Date: February 19, 2019 Drawn: T.B. Do not scale drawing Sheet 1 of 1

8 7 6 5 4 3 2 1